

LEASEHOLD



Room

**35 LYNDWOOD  
COURT, STONEYGATE,  
LEICESTER, LE2 2EJ**

**£105,000**

**FEATURES**

- Cash Buyers Only
- Sought after location
- Lounge / Diner
- 2 Bedrooms
- No Chain
- Ground Floor Flat
- Kitchen
- Bathroom



**SETHS**

# 2 Bedroom Room located in Leicester

Call us on

0116 266 9977

[sales@seths.co.uk](mailto:sales@seths.co.uk)

[www.seths.co.uk](http://www.seths.co.uk)

**\*\*NO CHAIN - CASH BUYERS ONLY\*\***

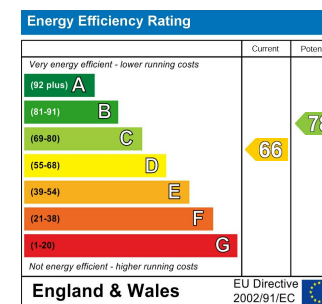
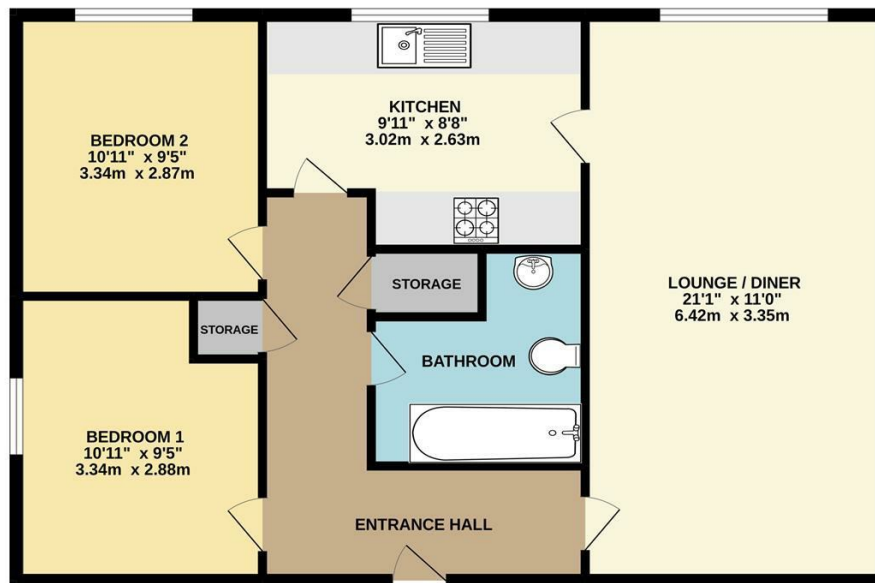
A Two Bedroom GROUND FLOOR FLAT located in the popular area of STONEYGATE within close proximity to many local amenities including an abundance of shops on ALLANDALE ROAD. Ideal first time buy or investment.

Council Tax Band

**B**

Contact Seths for viewing arrangements

GROUND FLOOR



Agents Note: Whilst every care has been taken to prepare these particulars, they are for guidance purposes only. All measurements are approximate and are for general guidance purposes only and whilst every care has been taken to ensure their accuracy, they should not be relied upon and potential buyers are advised to recheck the measurements.

Whilst every attempt has been made to ensure the accuracy of the floorplan contained here, measurements of doors, windows, rooms and any other items are approximate and no responsibility is taken for any error, omission or mis-statement. This plan is for illustrative purposes only and should be used as such by any prospective purchaser. The services, systems and appliances shown have not been tested and no guarantee as to their operability or efficiency can be given.  
Made with Metropix ©2022